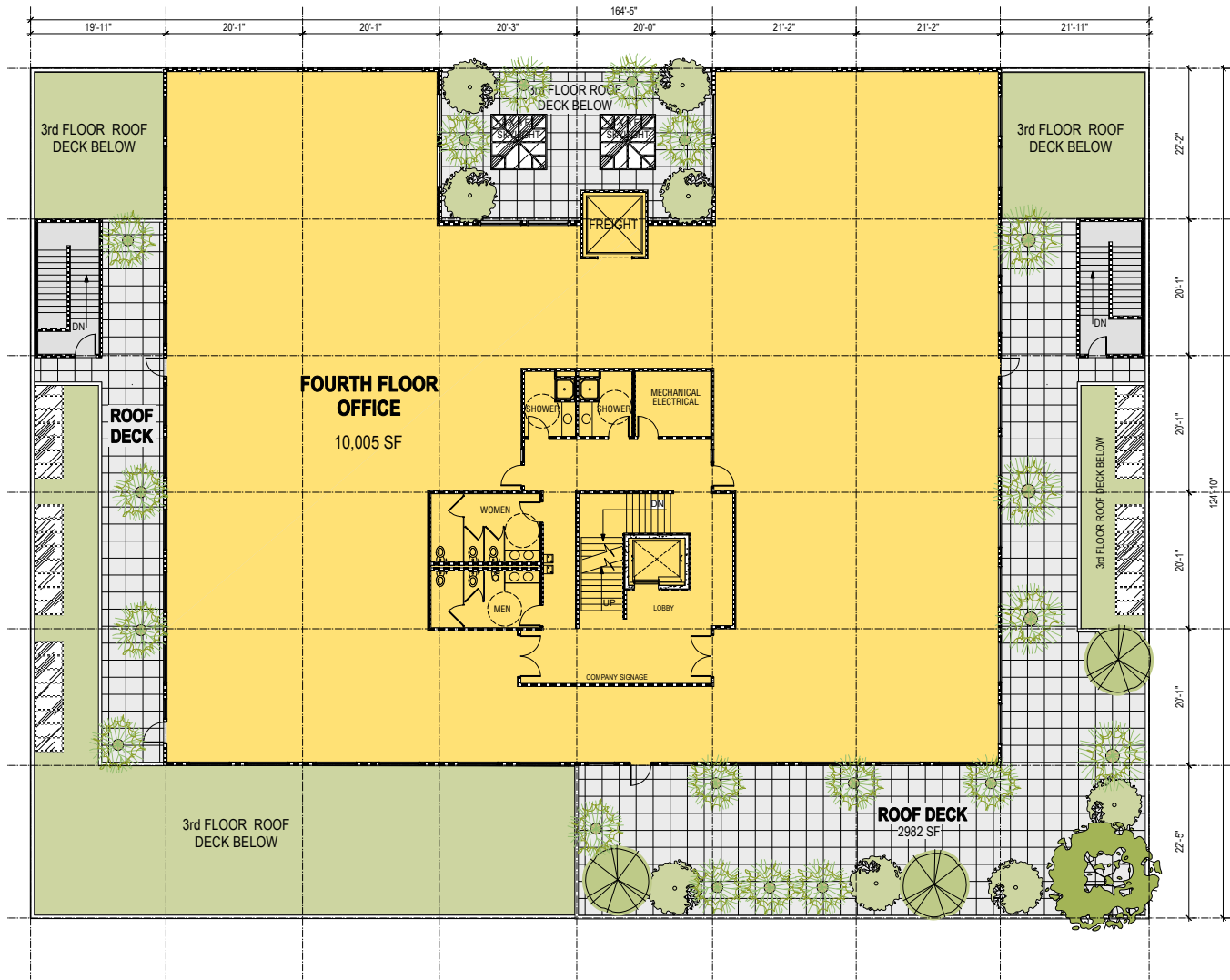


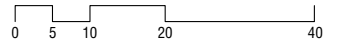


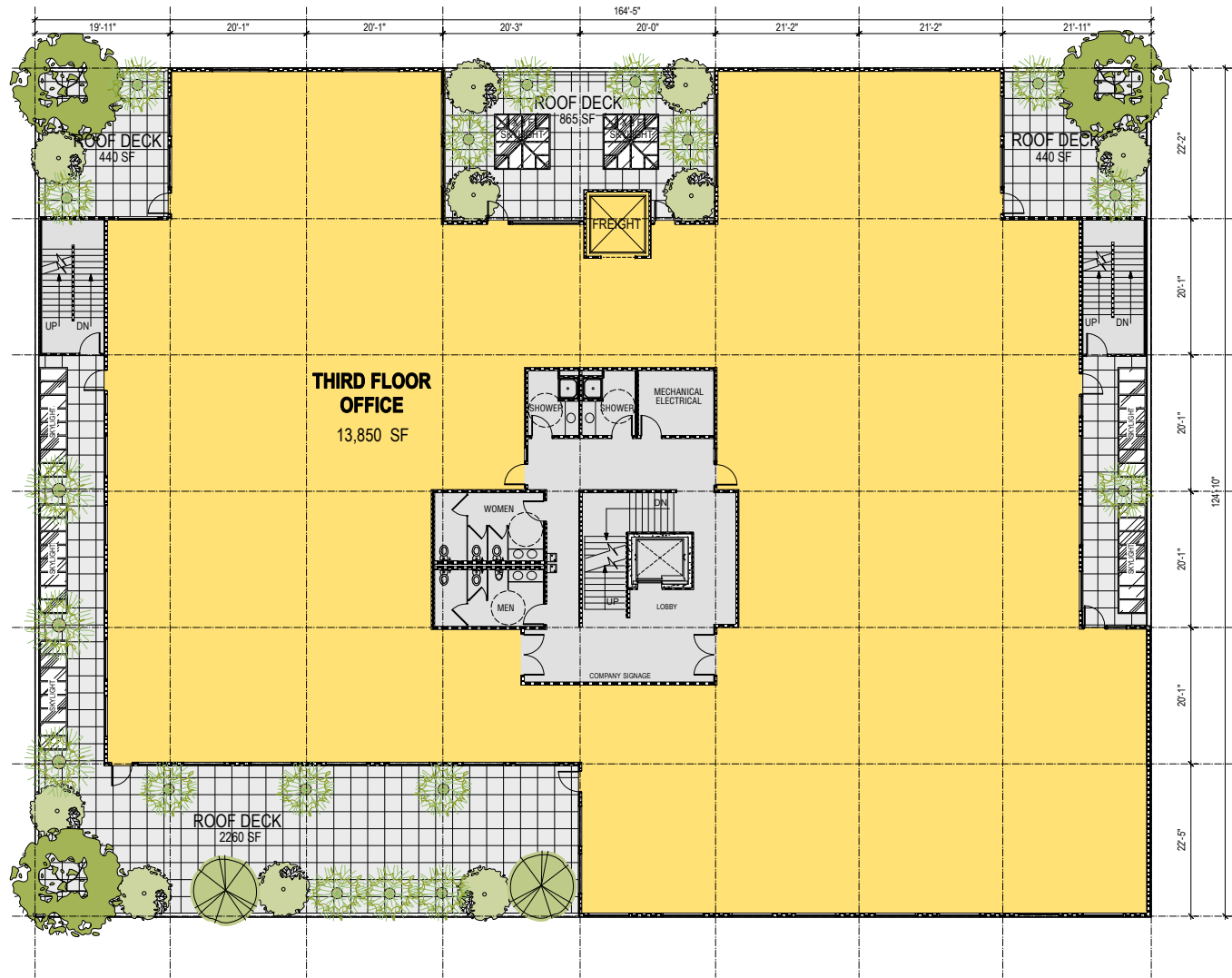
Elevation: Cornwall Avenue  
Four Story Office Building with Ground Floor Retail

1308 - 1320 CORNWALL AVENUE  
BELLINGHAM, WASHINGTON



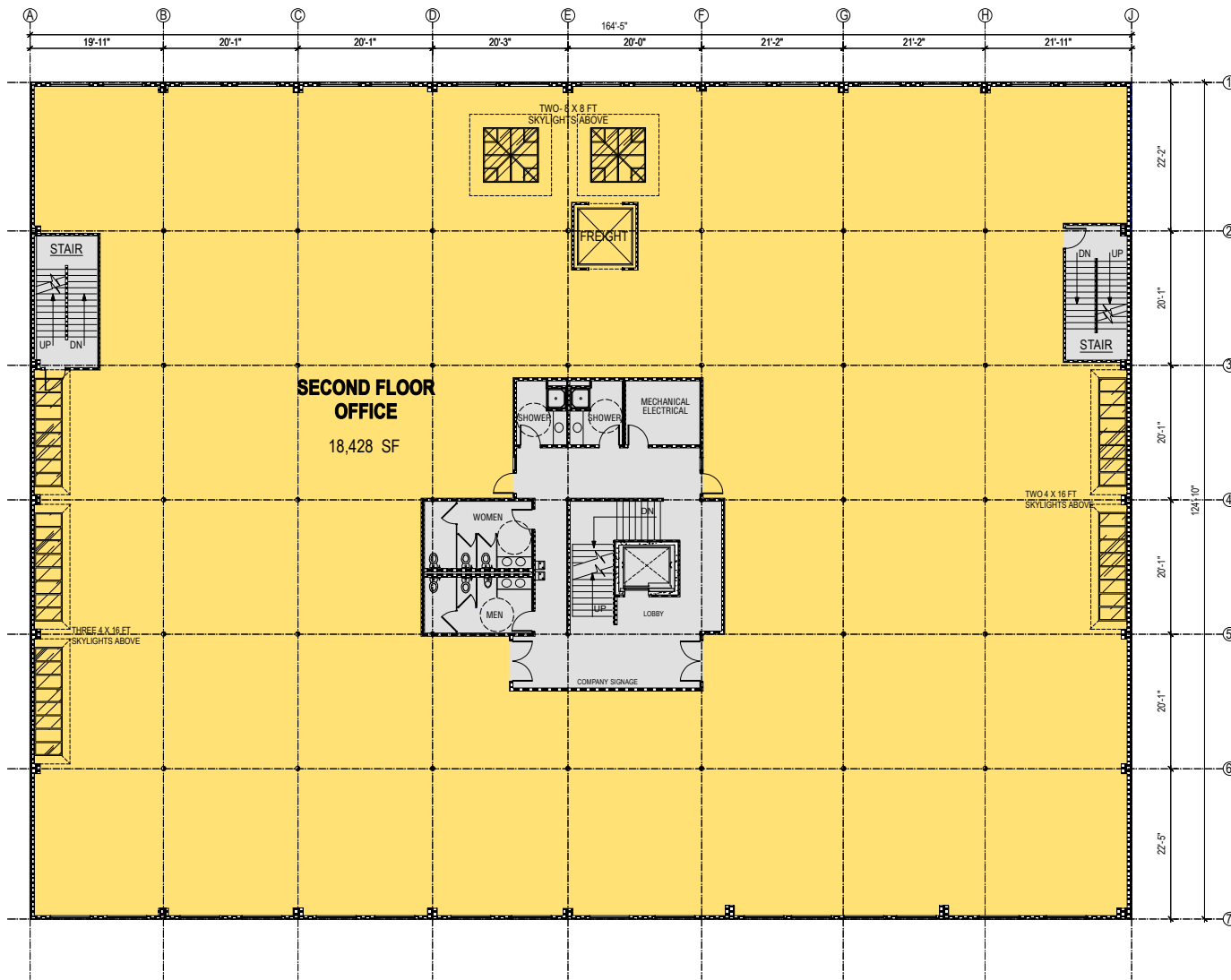
Fourth Floor





Third Floor





Second Floor





### Building Data

PROJECT 1306 - 1320 CORNWALL AVE  
 LOCATION: BELLINGHAM, WA  
 ZONING: CENTRAL BUSINESS DISTRICT  
 COMMERCIAL CORE

CONSTRUCTION: TYPE III-B  
 w/AUTO SPRINKLER

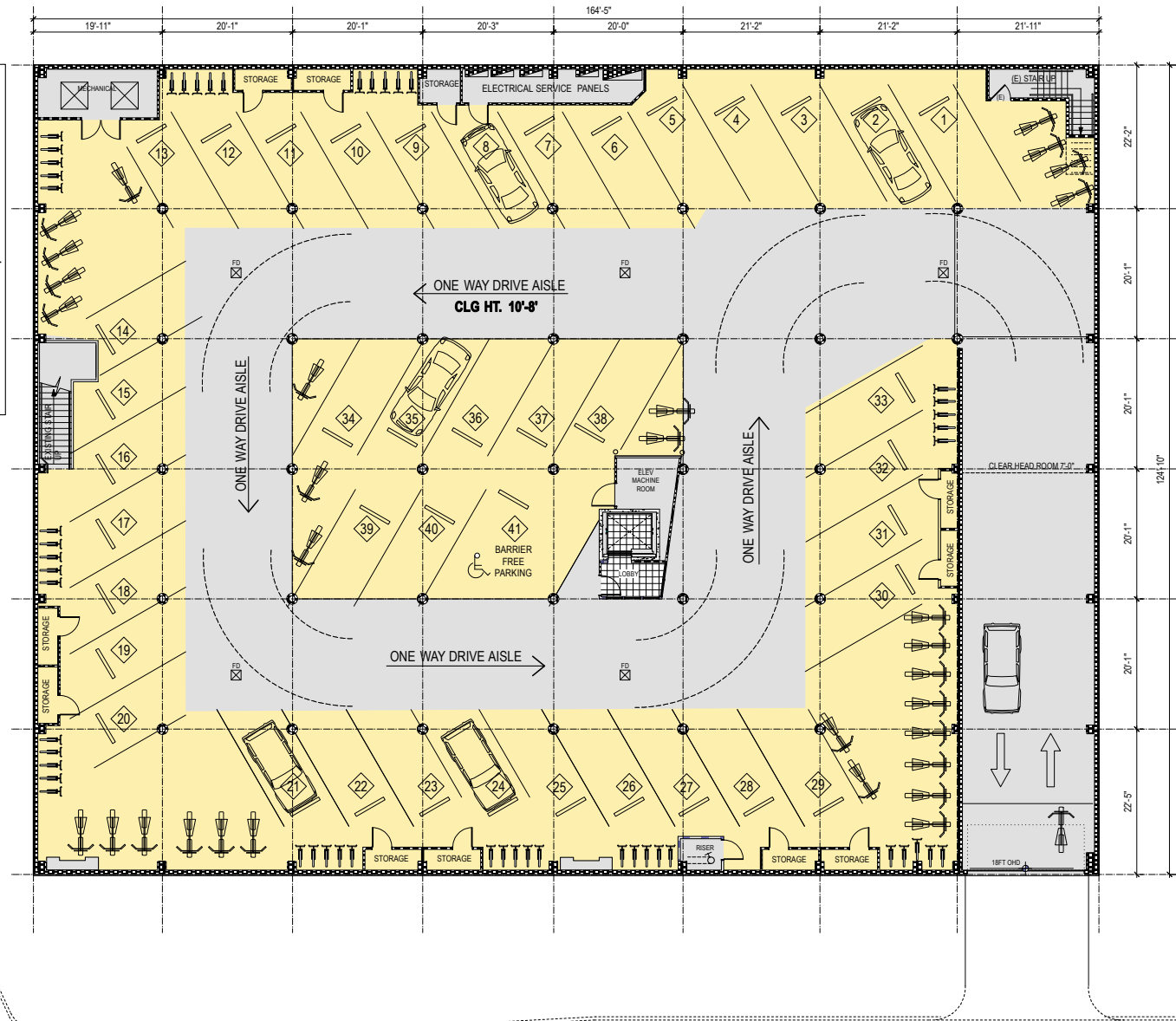
### Lower Level Parking

GROSS FLOOR AREA: 20,554 SQ FT

#### PARKING SPACES:

AUTOMOBILES: 41  
 MOTORCYCLES & SCOOTERS: 30  
 BICYCLES: 50  
**TOTAL VEHICLE SPACES: 121**

11 STORAGE UNITS:



Basement Level Parking Garage

