

For Lease

6,000 SF TURN-KEY RESTAURANT SPACE

1414 Cornwall Avenue • Downtown Bellingham, WA



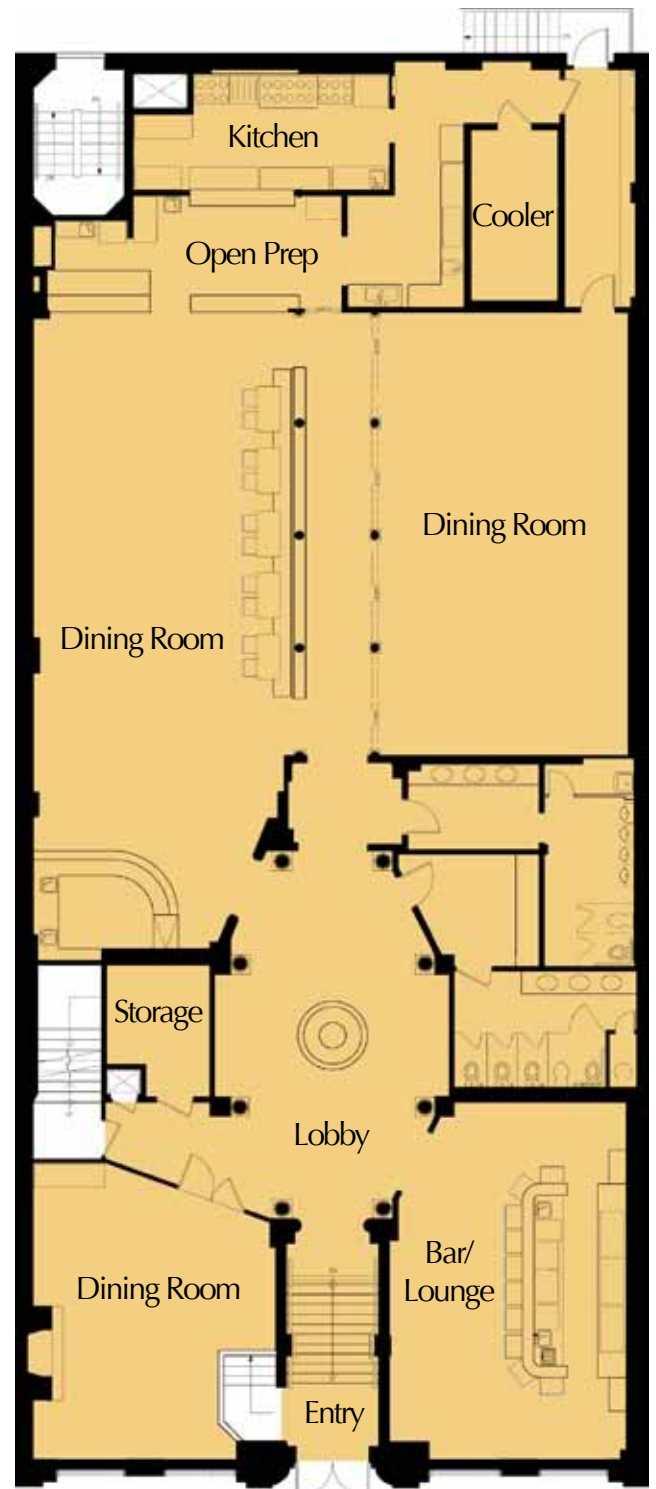
Leasing Information

Lease Rate: \$12/SF/Yr

Rentable SF: 6,000

Highlights

- Prime downtown location
- Turn-key restaurant space
- High ceilings (14 feet)
- Main floor of beautiful, historic building
- Spacious sidewalk seating area
- Sprinklered and seismically retrofitted



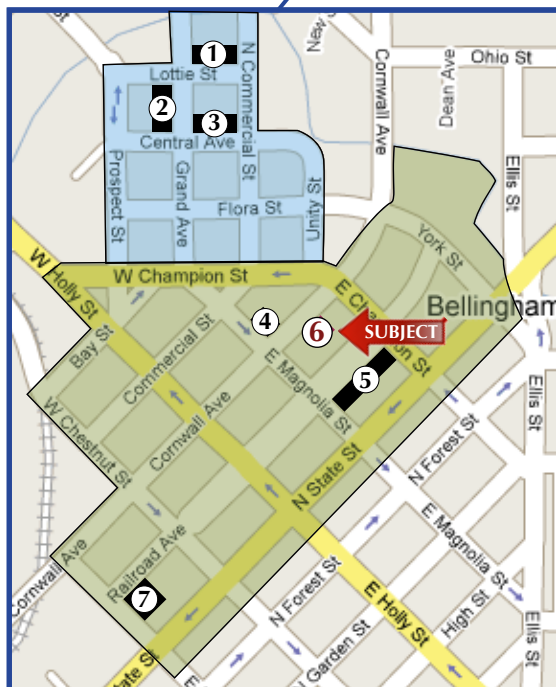
© 2011 River Oak Properties, Inc. This information has been obtained from sources believed reliable. We have no reason to doubt its accuracy but cannot guarantee it.

Douglas Tolchin
360.303.6122
doug@riveroak.net

**RIVER
OAK**
PROPERTIES
INCORPORATED

Location

1414 Cornwall Avenue
Bellingham, WA



Downtown Bellingham

CIVIC CENTER

- ① City Hall
- ② Whatcom County Courthouse & Offices
- ③ Bellingham Public Library

COMMERCIAL CORE

- ④ Federal Building & U.S. Post Office
- ⑤ WTA Transit Terminal/Bus Station
- ⑥ **Subject Property** - 1414 Cornwall Avenue
- ⑦ Bellingham Farmer's Market